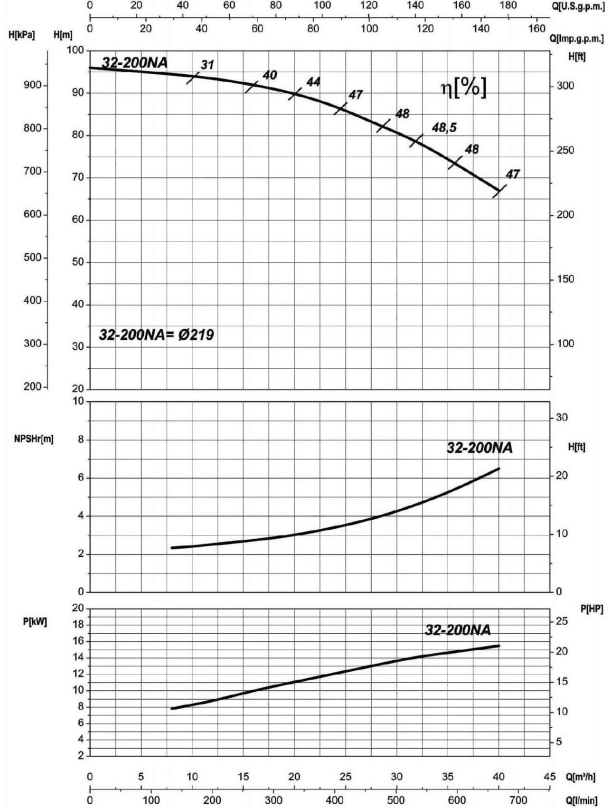


Receiver

From

 Company name
 Respons. Department
 Person in charge
 Phone number
 Fax no
 E-mail address

UNI EN ISO 9906-A



Operating data specification

Nominal flow	US g.p.m. 0
Nominal head	ft 0
Static head	ft 0
NPSH - v value of plant	ft 0
Inlet pressure	psi 1.42
Fluid	Water, pure
Operating temperature t A	°F 68
Density at t A	lb/ft ³ 62.32
Kin. viscosity at t A	ft ² /s 1.082E-5

Pump

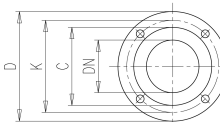
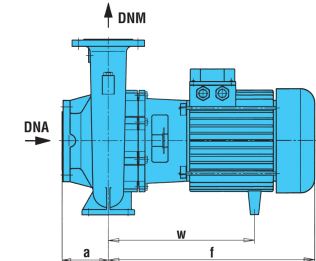
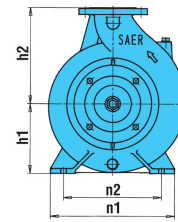
Pump name	6IR32-200NA	
Size	50/32/200	
Design		
Speed rpm	3600	No of stages 1
Impeller type		
Flow	Nominal	US g.p.m.
	Max-	US g.p.m. 176
	Min-	US g.p.m. 35.2
Head	Nominal	ft
	Max-	ft 310
	Min-	ft 220
Head H(Q=0)	ft 315	
NPSH 3%	ft	
Max. working pressure	psi 137	
Shaft power	hp	
Efficiency	%	
Max absorbed power	hp 20.28	

Materials Pump

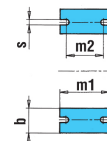
Shaft	Stainless steel AISI 431 (1.4057)
Impeller	Cast iron EN-GJL-250
Pump body	Cast iron EN-GJL-250
Seal disc	Cast iron EN-GJL-250
Gasket	Natural fiber
Mechanical seal	BVEG (Grafito/Ossido Allumina/EPDM)

Dimensions in inch

a	3 ¹ / ₈	z1	10 ³ / ₁₆
b	1 ¹⁵ / ₁₆	z2	8 ¹ / ₂
d	1/2		
DNA	1 ¹⁵ / ₁₆		
DNM	1 ¹ / ₄		
f	22 ³ / ₁₆		
h1	6 ⁵ / ₁₆		
h2	7 ¹ / ₁₆		
m1	3 ¹⁵ / ₁₆		
m2	2 ³ / ₄		
n1	9 ⁷ / ₁₆		
n2	7 ¹ / ₂		
s	9 ⁹ / ₁₆		
w	7 ¹ / ₄		
x1	12 ⁵ / ₈		
x2	11		



C	3 ³ / ₁₆	C	4
D	5 ¹ / ₂	D	6 ¹ / ₂
DN	1 ¹ / ₄	DN	1 ¹⁵ / ₁₆
K	3 ¹⁵ / ₁₆	K	4 ¹⁵ / ₁₆
n°	3 ⁹ / ₁₆	n°	3 ³ / ₁₆
Øn	3 ³ / ₄	Øn	3 ³ / ₄



Motor	Frame size	132 M		
Manufacturer / Type	SAER	MEC132M-2P-15		
Rated power	hp	20.115	Efficiency 4/4	88 %
Electric current	A	25 A	Speed rpm	3600
Electric voltage	V	460V	3~	Hz 60
Starting mode	Unknown			
Degree of protection	IP 55	Insulation class	F	

Remarks:

Project	Project ID	Created by	Created on	Last update
			2022-08-01	

Receiver

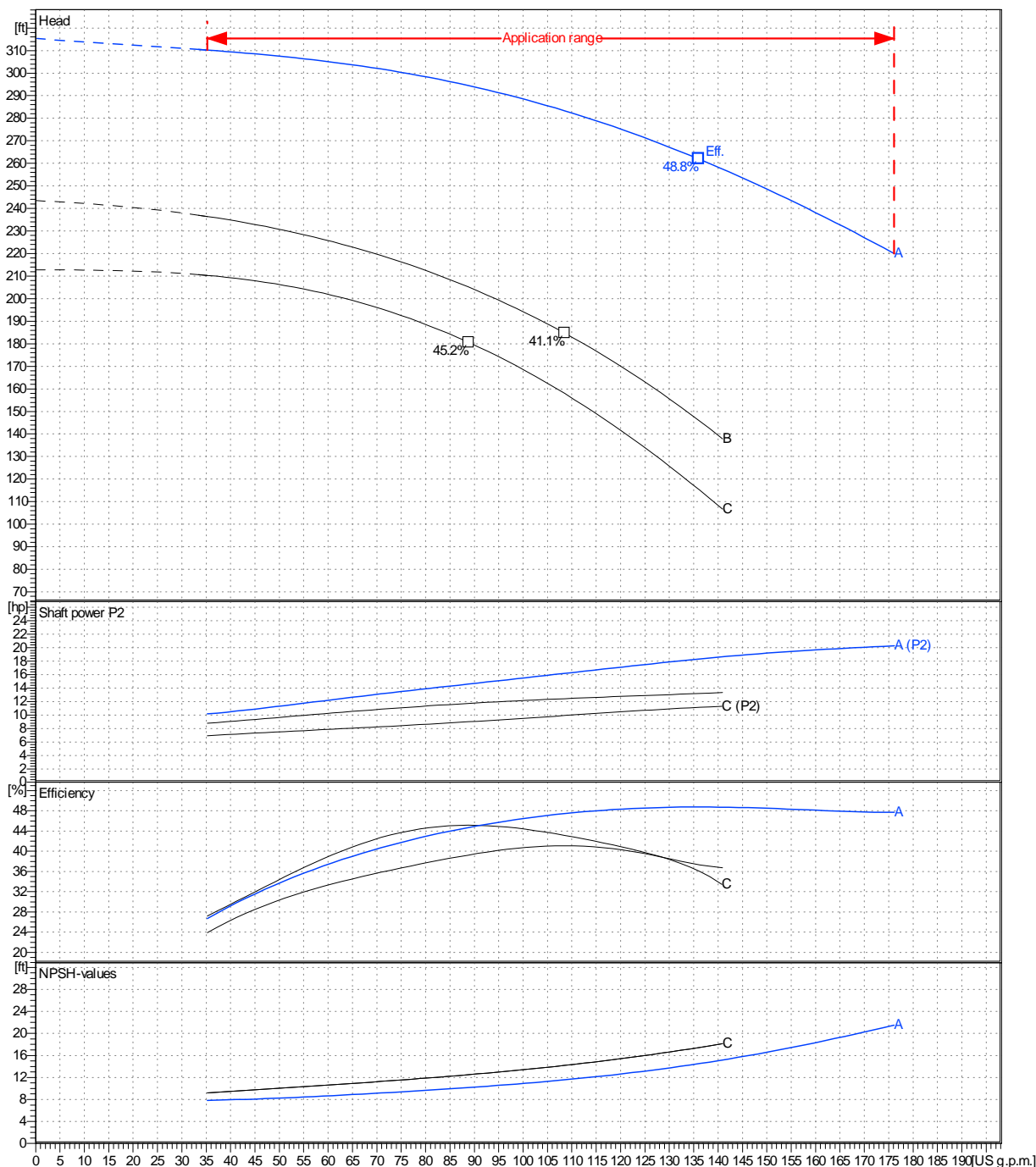
From

 Company name
 Respons. Department
 Person in charge
 Phone number
 Fax no
 E-mail address

Operating area	Flow	Head	Impeller type
Operating data specification	0 US g.p.m.	0 ft	Impeller construction Closed
Pump data	US g.p.m.	ft	Sense of rotation Clockwise from the drive end
			Outlet width DN 32
	Min.	Max.	Speed
	US g.p.m.	US g.p.m.	rpm
	35.2	176	3600
	Max. η	H(Q=0)	Frequency
	US g.p.m.	ft	Hz
	136	315	60 Hz
	Max. η	P2(Q=0)	
	US g.p.m.	hp	
	136	20.3	
	Max. η	Max. η	
	US g.p.m.	hp	
	136	18.3	

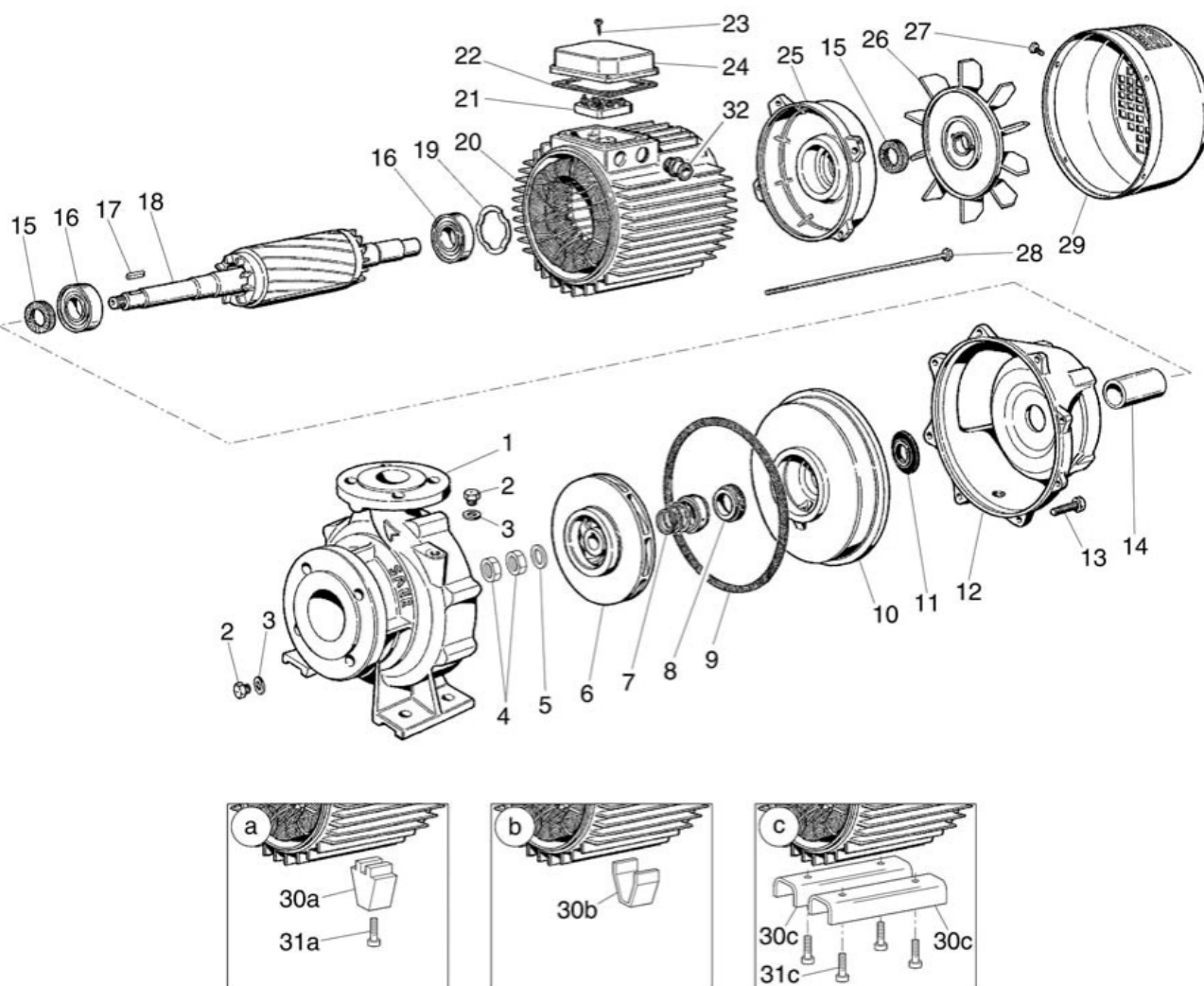
 Performance data based to: Water, pure [100%]; 68°F; 62.3lb/ft³; 1.08E-5ft²/s

UNI EN ISO 9906:2012 - Grade 3B



Project	Project ID	Created by	Created on	Last update
			2022-08-01	

Company name
Respons. Department
Person in charge
Phone number
Fax no
E-mail address



Project

Project ID

Created by

Created on
2022-08-01

Last update