



# **Technical Data** **Centrifugal Self Priming PTO Tractor Pump -** **JCA 2-79022**

Revision no.

Page:  
1

Receiver

From

Company name  
 Respons. Department  
 Person in charge  
 Phone number  
 Fax no  
 E-mail address



**Brand: JMS**

**Model: JCA 2-79022**

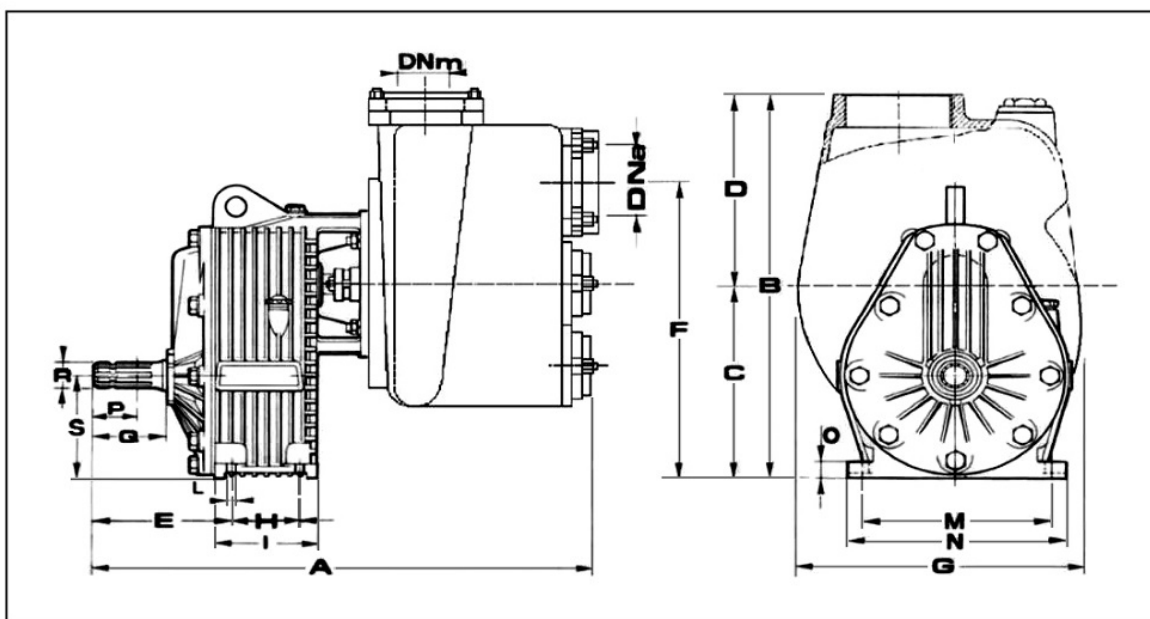
  
 MADE IN ITALY

**Weight**

lb.

62

## **Dimensions:**



### **Inlet and Outlet Flange**

DNa	DNm
2	2

### **Pump Installation Size (inch)**

A	B	C	D	E	F	G	H	I	L	M	N	O	P	Q	R	S
16	15	9	6	7	11	8	4	6	1	4	5	1	2	3	1 3/8	6

Project

Project ID

Created by

Created on

Last update



# Performance Curves

## Centrifugal Self Priming PTO Tractor Pump - JCA 2-79022

Revision no.

Page:

2

Receiver

From

Company name

Respons. Department

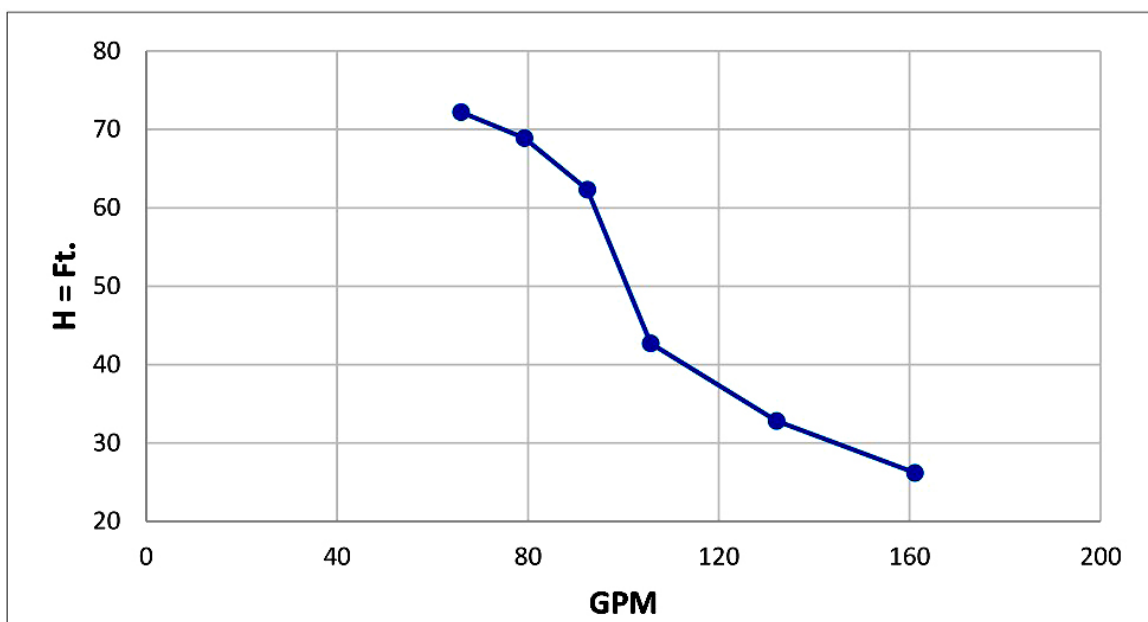
Person in charge

Phone number

Fax no

E-mail address

Model	HP	R.P.M. PTO	Ratio	R.P.M. Pump	Solid Passage	Capacity						
JCA 2- 79022	15	540	1 : 7.90	4000	in.	Gal/Min	66	79.3	92.5	105.7	132.1	161.1
					0.4	Ft.	72.2	68.9	62.3	42.7	32.8	26.2
						Cv ass.	1.9	2	2	2.2	2.8	3



### Parts List and Materials:

Parts List		Material
1	SUCTION COVER	Grey fine grained cast iron
2	IMPELLER	Grey fine grained cast iron
3	PUMP CASING	Grey fine grained cast iron
4	MECHANICAL SEAL	Or packing gland
5	GEAR BOX	Grey fine grained cast iron
6	PINION	Cemented and tempered steel
7	DRIVING WHEEL	Cemented and tempered steel
8	PROTECTION CARTER	Nylon

Project

Project ID

Created by

Created on

Last update